

GB



Original operating manual (Version 5)

- Product: BAUER dustbin tipping station
- Type: MKS-12V





Table of contents

- 1 Basic information
 - 1.1 Type plate
 - 1.2 Spare parts list with associated drawing
 - 1.3 Operation

- 2 Basic safety instructions
 - 2.1 Observe the instructions in the operating manual
 - 2.2 Obligations of the proprietor
 - 2.3 Obligations of the personnel
 - 2.4 Dangers when working with the machine
 - 2.5 Intended use

- 3 Warranty and liability
 - 3.1 Warranty and liability
 - 3.2 Organisational measures
 - 3.3. Safety devices
 - 3.4 Informal safety measures
 - 3.5 Training the personnel
 - 3.6 Machine controller
 - 3.7 Safety measures in normal operation
 - 3.8 Dangers due to electricity
 - 3.9 Servicing and maintenance, trouble-shooting
 - 3.10 Structural modifications to the machine
 - 3.11 Cleaning the machine and disposal

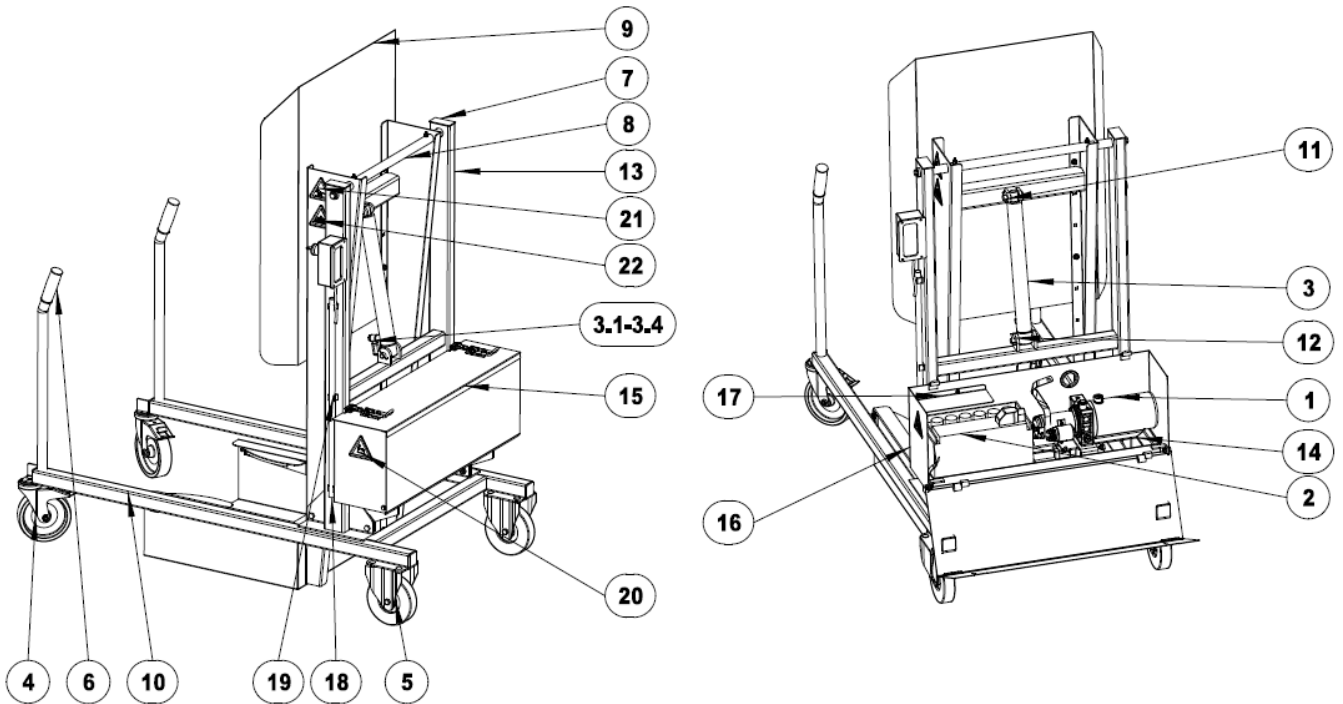


1.1 Type plate

Typ	MKS-12V	ESP	410 mm
Herstell-Nr.		LSP	-
Baujahr		Vorbaumaß	-
Inhalt		stapelbar	-
Eigengewicht	154 kg	hydr. Druck min.	140 bar
Tragfähigkeit	110 kg	max.	-

Achtung: Tragfähigkeit der Kombination von Flurförderzeug und Anbaugerät einhalten!

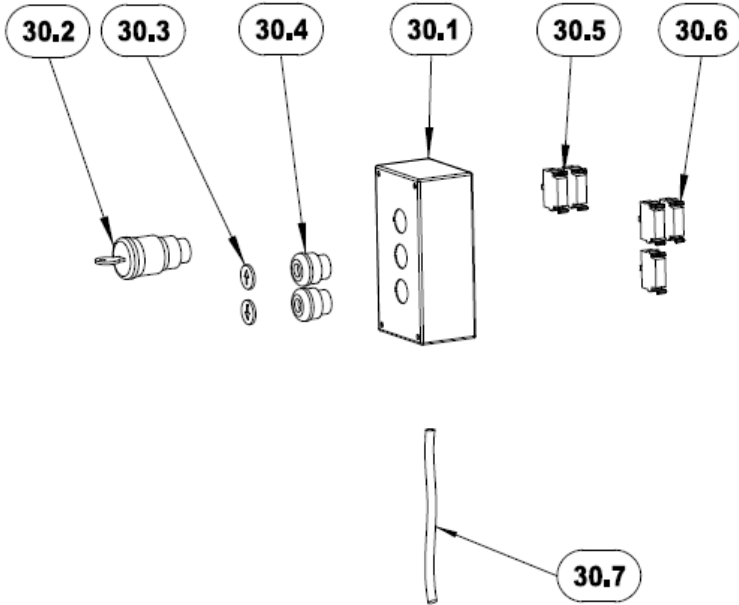
1.2 Spare parts list with associated drawing



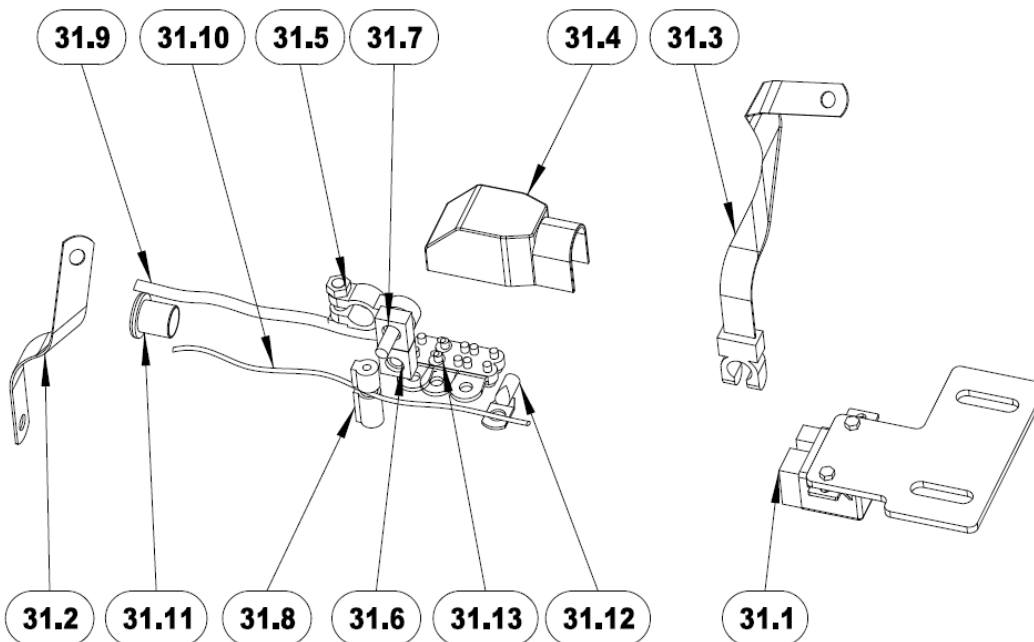


Item:	Name:	Item No.:
1	Hydraulic unit	170419, 2 x 120243
2	Battery	170920
3	Hydraulic cylinder	170465
3.1	Angled swivel fitting	2 x 170180
3.2	Hydraulic hose	170109
3.3	Throttle check valve	170151
3.4	Reducer	170201
4	Fixed castor incl. screw fitting	2 x 259620, 8 x 120197, 8 x 121116
5	Swivel castor with brake incl. screw fitting	2 x 259520, 2 x 120321, 2 x 121190
6	Handle	2 x 232008
7	Plastic slider	2 x 232018
8	Shaft incl. screw fitting and grease nipple	4476-07-0001, 2 x 120243, 2 x 116220, 2 x 227400
9	Swivel device fully screwed including rubber-metal buffer and self-locking nut	4476-07-0100, 2 x 242015, 2 x 121021
10	Trolley	4476-09-0100
11	Bolt cylinder top incl. dowel pin	4476-07-0300, 118264
12	Bolt cylinder bottom incl. dowel pin	4476-07-0400, 118264
13	Stud frame incl. screw fitting	4476-07-0700, 4 x 120248, 4 x 121154
14	Console electrohydraulic components	4476-09-0600
15	Protective casing cover including fasteners and screw fitting	4476-09-0200, 2 x 237006, 4 x 120131, 4 x 121073
16	Protective casing rear side	4476-09-0300, 3 x 120200, 3 x 116130, 3 x 121116, -232009-160
17	Storage tray including screw fitting	4476-09-0000, 2 x 120131, 2 x 121073
18	Cable conduit	-170742-720
19	Clip clamp	3 x 170772
20	Battery warning sign	270106
21	Hand injury warning sign	270113
22	Crushing injury warning sign	270119
23	Type plate	4476-09-0000-TS

Emergency stop key switch



Electrohydraulic components

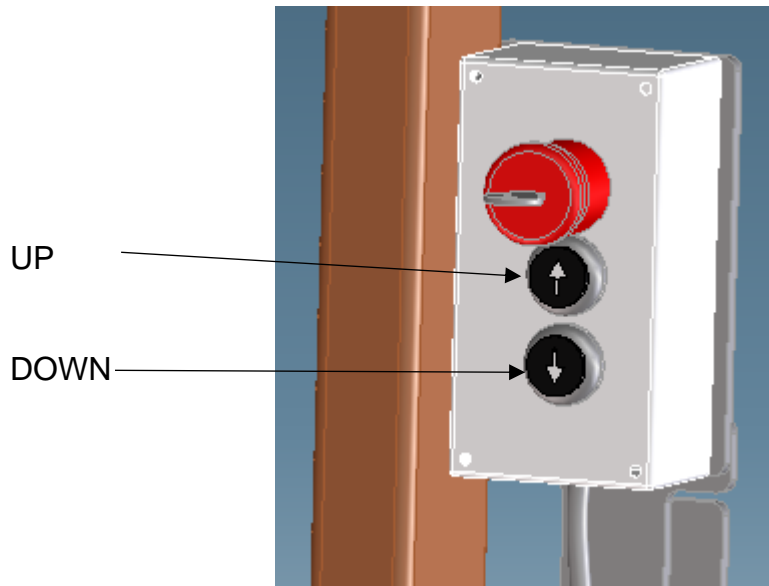




Item:	Name:	Item No.:
30	Emergency stop key switch	
30.1	Empty casing including screw fitting	170740, 2x170726, 2x170727
30.2	Emergency stop key switch including key	170902
30.3	Flat key plate	2x170716
30.4	Push button	2x170704
30.5	Contact element	2x170703
30.6	Contact element	3x170715
30.7	Control cable	2 m 170901
30.8	Spare key	171155
31	Electrohydraulic components	
31.1	Power relay incl. adapter plate and screw fitting	171222, 4476-09-0002, 2 x 120059
31.2	Grounding strip	170722
31.3	Grounding strip	170723
31.4	Battery cover	171153
31.5	Pole terminal	170925
31.6	Insulating nut	170924
31.7	Insulating body	171223
31.8	Cable fuse	170725
31.9	PVC cable	170719
31.10	PVC cable	171311
31.11	Sealing nipple	170706
31.12	Tubular cable lug	171310
31.13	Tubular cable lug	3 x 170717

1.3 Operation

1. Release the locks on the two swivel castors.
2. Take hold of the waste bin tipping station by the handles and move it to the place of use.
3. Apply both parking brakes of the swivel castors.
4. Push the waste bin between the two swivel castors into the entry shaft of the swivel device.
5. Insert the key in the emergency stop key switch and turn it.



- The emergency stop key switch is located on the stud frame of the waste bin tipping station.
 - After actuation, the switch engages and must be unlocked again by turning it to the right (push button).
 - The emergency off function may only be triggered in emergencies, in case of danger to man or machine!
6. Press the UP button to raise the swivel device with the waste bin until it is clear of the ground.
 7. Release the locks on the two swivel castors.
 8. Move the waste bin tipping station to the emptying point.
 9. Apply both parking brakes of the swivel castors.
 10. Press the UP button to raise and swivel the swivel device with the waste bin.
 11. Press the DOWN button to move the swivel device back to the starting position.
 12. Move the waste bin out of the shaft of the swivel device.
 13. The waste bin tipping station is ready to receive the next waste bin.
 14. Or release the brakes on the swivel castors and move the waste bin tipping station back to the parking space.
 15. Apply both parking brakes of the swivel castors.
 16. Turn the key back in the emergency stop key switch and pull it out.



Basic safety instructions

Product: Dustbin tipping station type MKS-12V

2.1 Observe instructions in the operating manual

- ⇒ In order to utilise this system safely and without malfunctions it is essential to be fully aware of the basic safety instructions and safety specifications.
- ⇒ This operating manual contains the most important instructions required to operate the machine safely.
- ⇒ This operating manual and in particular the safety instructions must be observed by all persons who work on the machine.
- ⇒ In addition, observe the local regulations and specifications for the prevention of accidents.

2.2 Obligations of the proprietor

The proprietor is obliged to permit only those persons to work on the machine who:

- ⇒ are aware of the fundamental regulations regarding occupational safety and accident prevention, and who have received instruction on operating the machine.
- ⇒ have read and understood the chapter on safety and the warning information in this operating manual, and who have signed to confirm this.
- ⇒ The safety-conscious work ethic of personnel shall be checked at regular intervals.

2.3 Obligations of the personnel

All persons who are required to work with the machine

agree, prior to starting work,

- ⇒ to observe the fundamental regulations regarding occupational safety and accident prevention.
- ⇒ to read the safety chapter and warning information in this operating manual and to confirm with their signature that they have understood this.

2.4 Dangers when working with the system

The machine or dustbin tipping station has been built according to the latest engineering practice and the recognised safety regulations. However, during its use danger to the life and limb of the user or third parties, or damage to the machine or to other property may occur. The machine is only to be used

⇒ for the intended purpose.

⇒ when in perfectly safe working order.

Malfunctions that may affect safety must be rectified immediately.



2.5 Intended use

The dustbin tipping station type MKS must be used exclusively for lifting and emptying 120 litre or 240 litre dustbins.

The maximum payload is 110 kg.

Any other use or any use exceeding that described here is considered to be improper use. BAUER GmbH shall not be liable for any damage incurred as a result of this.

Intended use also includes

⇒ Observing all instructions contained in the operating manual and

⇒ adhering to inspection and maintenance activities.

3.1 Warranty and liability

Warranty and liability claims in the case of personal injury or material damage are voided if such claims are attributable to one or more of the following causes:

- Improper use of the machine.
- Incorrect assembly, commissioning, operating or maintenance of the machine.
- Operating the machine with defective safety devices, or incorrectly attached or non-functioning safety and protective devices
- A failure to observe instructions in the operating manual regarding transport, storage, assembly, commissioning, operation, maintenance and set-up of the machine.
- Unauthorised modifications to the machine.
- Unauthorised changes to drive ratios, output and speed.
- Inadequate monitoring of the machine parts subject to wear.



- Improper repairs.
- Disastrous events due to the effects of foreign objects or force majeure.

3.2 Organisational measures

- ⇒ The proprietor must provide the necessary personal protective equipment.
- ⇒ All available safety devices must be checked regularly.

3.3 Safety devices

- ⇒ All safety devices must be correctly installed and functional prior to starting up the machine each time.
 - Safety devices may only be removed after bringing to a standstill and
 - safeguarding the machine against a restart.
- ⇒ When component parts are supplied, the proprietor must fit the safety devices in accordance with specifications

3.4 Informal safety measures

- ⇒ This operating manual must be stored at the operating site of the machine at all times.
- ⇒ In addition to the operating manual, the generally valid and local regulations for accident prevention and environmental protection must be made available and observed.
- ⇒ Keep all safety information and danger warnings on the machine in a legible condition.

3.5 Training the personnel

- ⇒ Only personnel who have received training and instruction are permitted to work with the machine.

3.6 Machine controller

- ⇒ Never make changes to the machine controller!
- ⇒ Only trained personnel are permitted to operate the controller.

3.7 Safety measures in normal operation

- ⇒ Only operate the machine if all of the safety devices are fully functional.
- ⇒ Before starting the machine up, ensure that this will place no one at risk.
- ⇒ The machine must be checked for externally visible damage and the functionality of the safety devices at least once every day.

3.8 Dangers due to electricity

- ⇒ Work on the electrical supply to the system must only be carried out by an electrician.
- ⇒ Check the electrical equipment on the machine regularly. Tighten loose connections and remove burnt cables immediately.
- ⇒ The controller housing must be kept closed at all times. Access is only permitted for authorised personnel with a key or tool.
- ⇒ If work is required on conductive parts, a second person must be present and available to switch off the main switch in the event of an emergency.



3.9 Servicing and maintenance, trouble-shooting

- ⇒ Carry out prescribed settings, maintenance and inspection work in a timely manner.
- ⇒ Inform operating personnel before starting maintenance or servicing work.
- ⇒ During all maintenance, inspection and repair works, shut off the voltage supply to the machine and safeguard the main switch against an unintended reactivation.
 - Switch off the main switch and remove the key.
 - attach a warning sign, warning against reactivation.
- ⇒ Carefully fasten and secure large modules to lifting gear when replacing.
- ⇒ Ensure that loosened screwed connections are firmly seated.
- ⇒ Once maintenance work is complete, check the functionality of the safety devices.





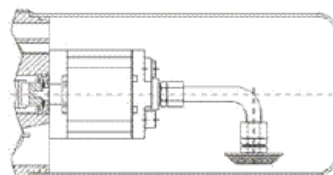
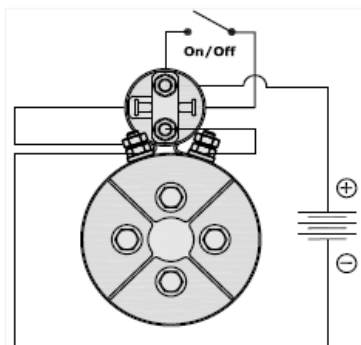
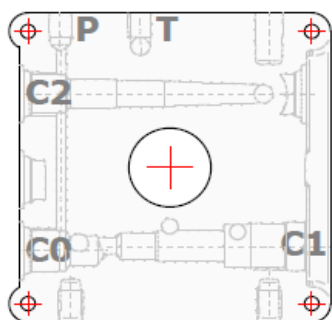
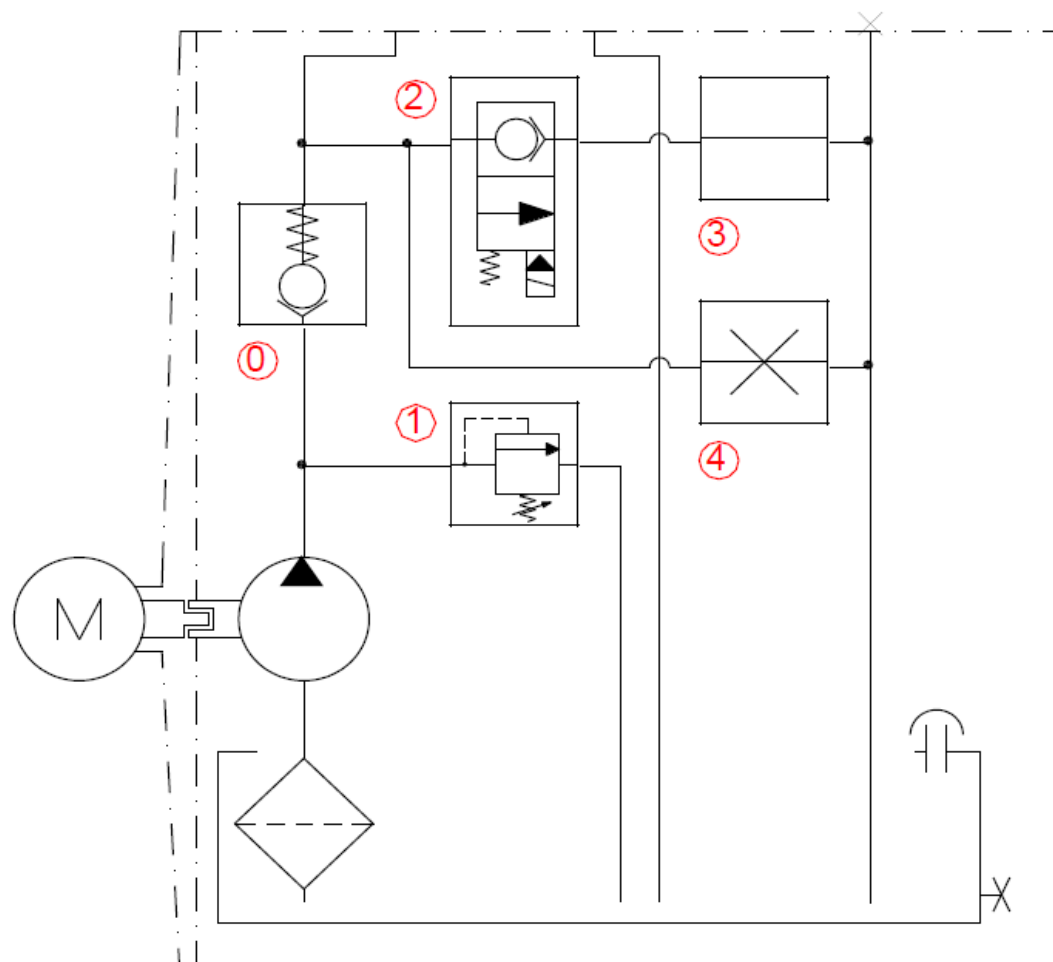
- ⇒ Multi-purpose grease must be injected with a grease gun every three months through the grease nipple on the shaft (no. 11). Expanding old grease must be removed.
- ⇒ The operating instructions of the hydraulic unit manufacturer must be observed for maintenance and repair work.

3.10 Structural modifications to the machine

- ⇒ Changes, modifications and additions to the machine are prohibited without the approval of the manufacturer. This also applies to welding work on load-bearing parts.
- ⇒ All modification measures require the written confirmation of Bauer GmbH.
- ⇒ Exchange machine parts immediately where these are not in perfect condition.
- ⇒ Only use original spare and wearing parts.
 - In the case of parts sourced from third parties, there is no guarantee that these are designed and manufactured to meet the stress and safety requirements.

3.11 Cleaning the machine and disposal

- ⇒ Handle and dispose of substances and materials used in the appropriate manner, in particular
 - when working on the lubricating systems and devices
 - when cleaning with solvents.



Ölbehälter:	Ölbehälter 2.5 Liter horiz. Anbau ohne F
Pumpe:	Pumpe 0.38 cc D gr. 0.5
Motor:	DC-Motor 12 Volt, 800 Watt
Max. Druck:	180 bar (4 Min)
Förderstrom:	Nicht kalkuliert
Finish:	<unlackiert>

MPPD01165

Firma:	Bauer 0142595
Zu Händen:	Herr Ebbing
Artikel:	MPPD01165
Datum:	6 juni 2018

